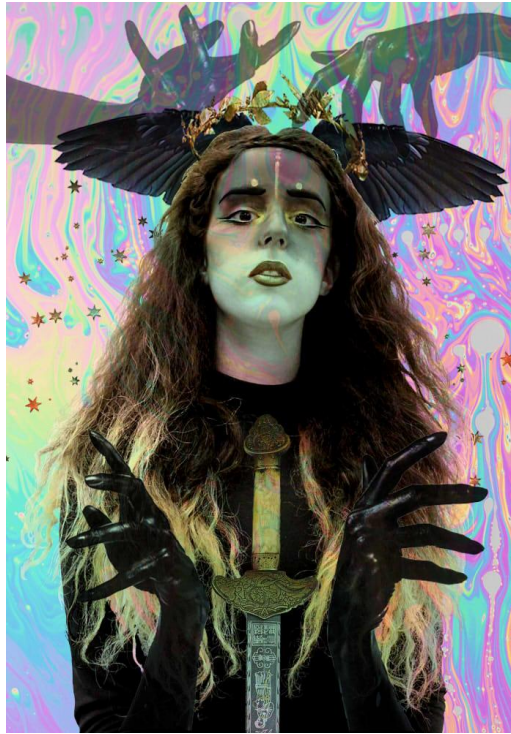


**Exhibition and Event Announcement**  
**April 2016**



Niji Hernandez, *Self-Deification*, 2016, Digital Print, 14 x 11 inches

***Women and Creativity House Student Exhibition***  
**April 20 - May 2, 2016**

Mary H. Dana Women Artists Series Galleries / Douglass Library, Rutgers University  
Sarina Aquino, Mirna Beshay, Avantika Butani, Erin Conversano, Jane Frank, Courtney Garcia,  
Niji Hernandez, Imani Munford, Cristina Sanchez, Nancy Wang, Andrea Zerpa, Mariah Painter

**Special Event: April 25, 2016**  
**Douglass Global Village Student Showcase & Exhibition Reception**  
7:15 – 8:15pm / Traves Hall, Douglass Student Center  
8:30 – 9:30pm / Douglass Library

**New Brunswick, NJ** – The Mary H. Dana Women Artists Series, a program of the Center for Women in the Arts and Humanities (CWAH) in partnership with Rutgers University Libraries, and Douglass Residential College's Women and Creativity House are pleased to announce the **2016 Women and Creativity House Student Exhibition**. This group exhibition features artworks of 12 students who are in the Women and Creativity House Living-Learning Community in the Global Village at Douglass Residential College, Rutgers University. The

exhibition will be on view from **April 20 – May 2, 2016**, in the Mary H. Women Artist Series Galleries at the Mabel Smith Douglass Library.

The focus of the Women and Creativity House Living-Learning Community is to de-mystify the creative process and encourage the development of themes such as identity and visual communication of women in the arts. The Women and Creativity House hopes to encourage development through multiple vehicles of expression: including visual art, performance, and creative writing. In this community, the topics of gender, sexuality, identity, creativity, and perception are explored and discussed through texts, films, lectures, and critiques. This exhibition highlights self-portraits, drawings, sculptures, video performances, and written works produced by the student artists during the course of the academic year, and is organized and co-curated by Stacy Scibelli (House Coordinator) and Sarah Ferreira (Center for Women in the Arts and Humanities Intern).

On Monday, April 25<sup>th</sup>, there will be a Douglass Global Village Student Showcase beginning at 7:15pm in Traves Hall, Douglass Student Center (100 George Street, New Brunswick, NJ 08901). Subsequently, there will be an exhibition reception in honor of the Women and Creativity House students beginning at 8:30pm in Mabel Smith Douglass Library. The exhibition and event are free and open to the public. For additional information visit: [cwah.rutgers.edu/special-projects/women-and-creativity-house/](http://cwah.rutgers.edu/special-projects/women-and-creativity-house/)

The Mary H. Dana Women Artists Series Galleries are located in the **Mabel Smith Douglass Library (8 Chapel Drive, New Brunswick, NJ 08901)**. Gallery hours are **Monday through Friday 9am – 4:30pm**. Contact CWAH about accessibility needs at [womenart@rci.rutgers.edu](mailto:womenart@rci.rutgers.edu).

This exhibition and event is sponsored by Douglass Residential College; New Jersey State Council on the Arts; and Center for Women in the Arts and Humanities, a unit of the Office of the Senior Vice President for Academic Affairs, Rutgers University. The Mary H. Dana Women Artists Series was founded in 1971 by renowned artist and Rutgers Graduate Joan Snyder, and is the oldest continuous running exhibition venue for contemporary women visual artists in the U.S.

###